

# Single Inlet

Small centrifugal fans



## KEY FEATURES

- Ecodesign ErP 2015 compliant
- Smaller sized direct drive fans
- Excellent air flow / pressure capability for size
- High velocity at discharge from larger models for localised 'spot cooling'
- Easy installation
- Very low maintenance
- Quiet operation

## Single Inlet Fans

A comprehensive range of small single inlet fans primarily developed for the electronics market and manufacturing process. Suitable for handling ambient temperature to 40°C. Constructed in die cast metal, ABS plastic, or mild steel depending on model, the range can achieve from 5.1

l/sec up to 128 l/sec . The majority of fans are ex-stock. Variance for OEM applications are available on request against a minimum order normally 100 off. Please apply to customer services for non standard designs.



## APPLICATIONS

- Filter units
- Electronic internal component cooling
- IC testing
- Cooling large motors and transformers
- Photocopiers
- Photographic processing equipment

\* Note - Fans are not suitable for EEXE, EEXD, ATEX or corrosive atmospheres

- Packaging machinery
- Plastic extrusion
- PCB manufacture
- Solder extraction fumes
- Microwave ovens
- Leisure applications, bouncy castle etc
- Car washers

## SPECIFICATIONS

Driven by either open frame shaded pole, ventilated voltage shaded pole or permanent capacitor type motors, very low maintenance is achieved by incorporating 'sealed

for life' bearings typically offering bearing life L10. 25,000 hours in ideal conditions. Test data in accordance with BS 848 Part1/ ISO 5801-2007.

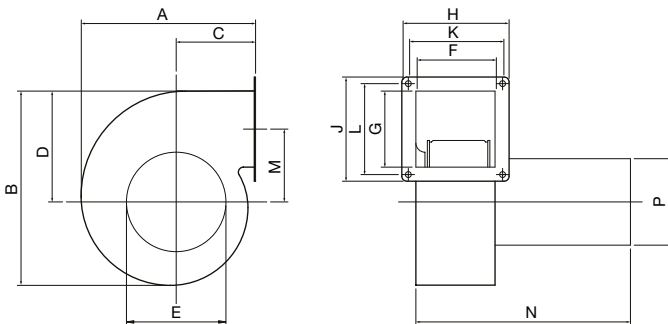
\* A degree of speed control is available on models 33BTFL, 40BTFL, 45CTL by voltage variation

## TECHNICAL DATA

Fan Model	Supply voltage	Frequency	Capacitor value	Max running current	Start current (approx)	Max input watts	Max air flow	Min static pressure	Noise level	Speed at max air flow	Weight	Max ambient temp
	Volts	Hz	µF	Amperes	Amperes	Watts	Litres/s	Pascal	dBA*	Rev/m	kg	°C
21ATXL	230	50	N/a	0.12	0.155	15	5.1	0	34	2720	0.7	40♦
26BTML	230	50	N/a	0.12	0.155	15.5	18.2	0	40	2230	0.7	40♦
26BTCL	230	50	N/a	0.12	0.155	15	16.2	0	34	2180	0.9	40♦
33BTFL	230	50	N/a	0.20	0.27	29.5	29.3	0	41	2380	1.3	40♦
40BTFL	115 / 230	50	N/a	0.75 / 0.375	1.08 / 0.54	57	49	0	50.5	2500	1.5	40●
45CTL	115 / 230	50	N/a	1.8 / 0.9	2.4 / 1.2	130	86.5	0	56.5	2330	2.4	40●
52BTXL	230	50	4	0.63	2.35	144	118.5	0	59	2835	3.5	40●
57BXL	230	50	4	0.81	155	187	128	0	63.5	2730	4.4	40●

\*at 1 metre ♦Impedance Protection ●Thermal Protection

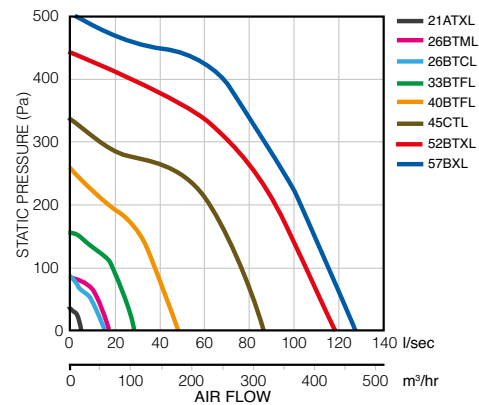
## DIMENSIONS



Fan Model	A	B	C	D	OE INLET	F INSIDE	G INSIDE	H	J	K CRS	L CRS	M	N	OP
21ATXL	85	88	43	49	42	28	34	-	-	47	-	30	90	-
26BTML	102	116	46	66	57	52.4	41.3	-	-	-	50.8	-	114	-
26BTCL	102	116	45	73	57	51	41	-	-	-	51	-	112	-
33BTFL	130	135	62	76.5	67	57	46.4	83	72	70	60	53.3	125	-
40BTFL	141	156	64	90	83	57	64	84	90.5	69.8	76.2	58	157	83
45CTL	172	189	79	107	95.5	76	73	103	100	90.5	87.3	70	206	83
52BTXL	195	216	89	124	111	64	89	117.5	117.5	88.9	73	78.5	175	100
57BXL	214	232	98	131	133	64	89	117.5	117.5	88.9	73	85.7	175	100

Dimensions are for guidance only - certified drawings available

## PERFORMANCE



## CONTROLS AND ACCESSORIES



See accessories for the range of Commercial Speed Controllers

Call: 01494 560800

Visit: [airflow.com](http://airflow.com)



**Airflow Developments Limited**  
Aidelle House, Lancaster Road,  
Cressex Business Park,  
High Wycombe, Buckinghamshire,  
United Kingdom, HP12 3QP

E-mail: [info@airflow.com](mailto:info@airflow.com)  
Telephone: +44 (0) 1494 525252

[airflow.com](http://airflow.com)

© Airflow Developments Limited. Airflow Developments Limited reserve the right, in the interests of continuous development, to alter specifications without prior notice. All orders are accepted subject to our conditions of sale which are available on request



80000688 Issue 1 06/07